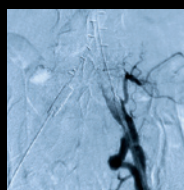
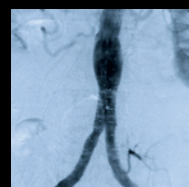


**Control Every Move.
See Every Detail.**

The SurgiGraphic® 6000
Image Guided Surgical Table



STERIS®


A Breakthrough for Image Guided Surgery

The SurgiGraphic 6000 table offers a new level of operating room performance and control—allowing you to bring radiology-quality imaging into the operating room.

WHY DO I NEED AN IMAGE GUIDED TABLE?

We designed every aspect of the SurgiGraphic 6000 table to meet the demands of your operating room environment - whether you are performing minimally-invasive vascular, orthopedic, or other procedures, this is the one imaging table that you need.

LATERAL, LONGITUDINAL, AND EVERYTHING IN BETWEEN

- > The SurgiGraphic 6000 table delivers the patient positioning and mobility you demand for most minimally invasive procedures requiring fluoroscopy; lateral and longitudinal float, Trendelenburg and reverse Trendelenburg, lateral tilt, height adjustment, and the most useful combinations of these movements.
- > No matter where you end up, you can instantly return to your starting position, level the table, or move to four easily programmed memory positions.
- > You will be able to position patient anatomy relative to the C-arm with new precision, speed up your procedures, and achieve the imaging you want with fewer exposures—resulting in less fluoroscopy time.

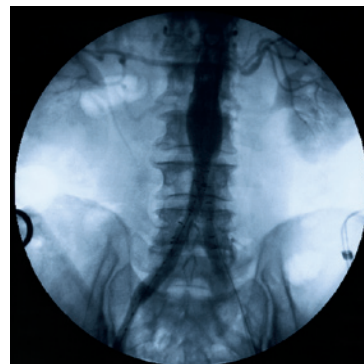
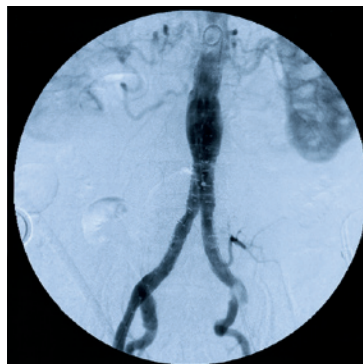
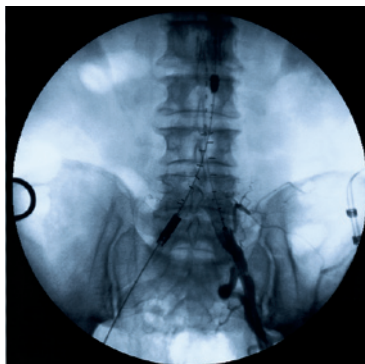
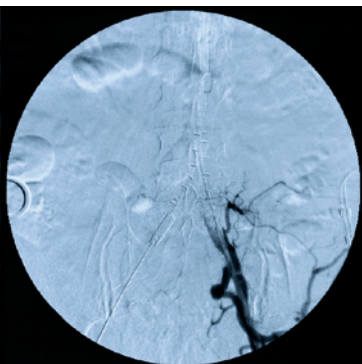
SMOOTH MOVE – THE SURGEON PALM CONTROL

- > STERIS's innovative and intuitive Surgeon Palm Control lets the surgeon single-handedly control every table movement, and includes a lock out function to prevent accidental table movement.
- > With the superior responsiveness of manual float, you can move the patient at your own speed—fast enough to chase the bolus, slow enough for sharp imaging.
- > Because there are no motorized controls in the float feature of the Palm Control, it is like the table top is gliding on a pristine sheet of ice – the ultra-smooth movement is something you have to feel to believe.



Control Every Move

The Surgeon Palm Control can be positioned on either side of the table, and allows for complete control of every table movement.



“Control of the table movements reduces OR time, decreasing the likelihood of infection and reducing costs.”

*Frank Pomposelli, M.D.
Clinical Chief, Division of Vascular Surgery
Beth Israel Deaconess Medical Center, Boston*

“This table has brought the imaging capabilities of the radiology suite into the operating room.”

*Jeffrey Slaiby, M.D.
Assistant Professor of Vascular Surgery
Brown University, Providence*

NEARLY FLAWLESS FLUOROSCOPY – THE END OF THE EDGE EFFECT

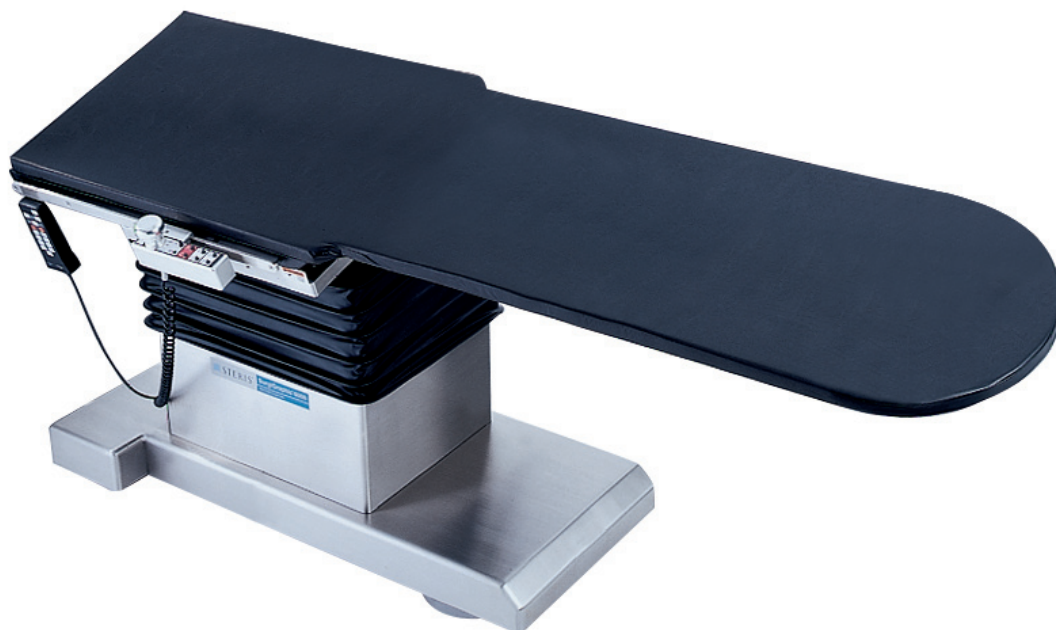
- > Metal-free and beveled to 45°, the edges of the SurgiGraphic 6000 virtually eliminate the edge effect - the visual obstruction most table edges cause during A/P and oblique imaging.
- > By minimizing attenuation, scatter, and edge effect, we give you higher quality imaging with less radiation energy.
- > The small, T-shaped design of the base allows you to position yourself flush with the table for long reach with less back strain. And there's more room for positioning the C-arm wherever you need it.
- > With up to 83" (211 cm) of radiolucent imaging surface, it's as if the patient were suspended in space for 360° viewing.

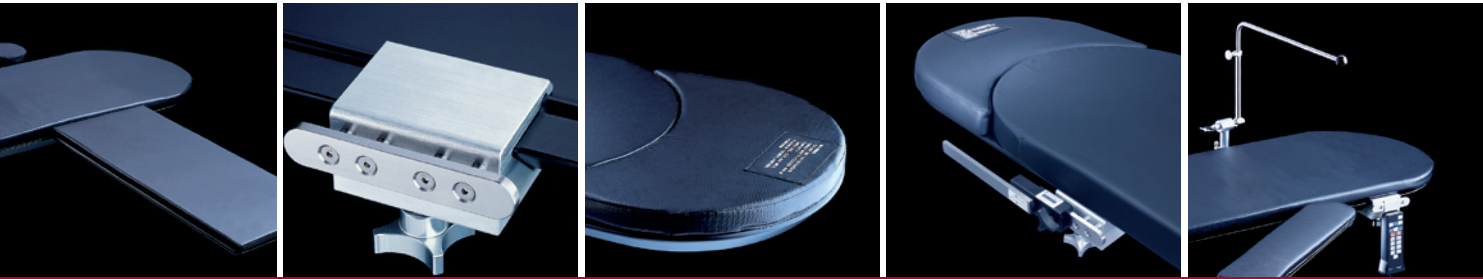
SAFETY FOR EVERYONE

- > For patient safety, the SurgiGraphic 6000 table is engineered to support 500 pounds (227 kg) with a reassuring 4:1 static load safety factor.
- > The table even automatically corrects for surface deflection caused by the patient's weight.
- > Our self-compensating floor locks establish eight points of contact with the floor for extra stability—critical on uneven hospital floors.
- > Locking is conveniently engaged and disengaged via the hand control, with a key sequence that reduces the potential for accidental unlocking.

EASY TO MAINTAIN

- > The base and column covers are brushed surgical stainless steel, and the casters are enclosed to prevent the accumulation of contaminants.
- > The upper column's accordion-style covering is specially designed with an easy-to-clean surface, which can help reduce the risk of cross-contamination.





Accessories for every procedure

The SurgiGraphic 6000 table's accessories are custom engineered to work with the unique design of the table, and extend its capabilities for image guided procedures.

RADIAL AV FISTULA BOARD (TA00-003)

- > For seamless intra-operative imaging, our AV Fistula Board's special design allows you to image from the fistula to the subclavian to the right atrium—with no metal obstructing the image.

STANDARD SIDERAIL ADAPTOR (TA 00-012 one, TA00-005 set of three)

- > The removable Side Rail Adaptor system attaches accessories wherever you need them on either side of the table, while keeping other areas free of metal imaging obstruction.
- > If an MIS procedure suddenly turns into an open procedure, the system allows you to quickly convert to a table with side rails.

CARBON FIBER EXTENSION (TA00-006)

- > The 100% Carbon Fiber Table Extension provides an additional 12" (30 cm) at the head of the table, for 83" (211 cm) of unobstructed radiolucent imaging surface.
- > The table's weight capacity is reduced to 400 pounds (181 kg) distributed weight when the carbon fiber extension is used.

SIDE RAIL EXTENDER (BF45-600)

- > The side rail extender facilitates placement of an armboard when the Carbon Fiber Head Extension is used.



UNIVERSAL ETHER SCREEN (BF07-400)

- > The Universal Ether Screen mounts directly on the table to prevent sterile field contamination during table movement.

CATHETER EXTENSION (TA00-002)

- > The SurgiGraphic 6000 table's unique Catheter Extension accessory attaches to the foot of the table and provides an instrument surface for catheters, guidewires, and balloons that moves with the patient as the table is floated during procedures (shown in photo above with 2 arm boards)

We've designed accessory packages that bundle the most useful accessories according to you procedural needs. Your STERIS Account Manager can help you choose.

STERIS – A Trusted Name in Healthcare

You can have complete confidence in your investment – the SurgiGraphic 6000 is built, sold, and serviced by the #1 surgical table manufacturer in the United States.

	SurgiGraphic 6000	SurgiGraphic 6000 (Fixed Base)
Equipment #	TA-01	TA-03
Unobstructed Imaging Length of Table	71" (180 cm)	71" (180 cm)
Unobstructed Imaging Length with Carbon Fiber Extension Accessory	83" (211 cm)	83" (211 cm)
Longitudinal Float	16" (41 cm)	16" (41 cm)
Lateral Float	8" (20 cm)	8" (20 cm)
Table Top Aluminum Equivalency	0.6 mm (Typical)	0.6 mm (Typical)
Table Top Length	92" (234 cm)	92" (234 cm)
Table Top Width	21" (53 cm)	21" (53 cm)
Trendelenburg/Reverse Trendelenburg	16°	16°
Lateral Tilt (left and right)	16°	16°
Table Height Range	Minimum 32" (81 cm) Maximum 42" (107 cm)	Minimum 30½" (78 cm) Minimum 39½" (100 cm)
Powered Floor Locks	Standard	N/A
Table Weight	990 lbs (449 kg)	990 lbs (449 kg)
Patient Weight Capacity	500 lbs (227 kg)	500 lbs (227 kg)

No surgical table fulfills your desire for imaging, positioning, and control like the SurgiGraphic 6000 table. For more information, contact your STERIS Account Manager.

STERIS OFFICES WORLDWIDE
 Canada 800 661 3937
 France 33 1 55 176000
 Italy 39 02 213 0341
 Japan 81 78 321 2271
 Korea 82 2 517 1517
 Latin America 305 442 8202
 Singapore 65 68 41 7677
 Spain 34 91 658 5920
 United Kingdom 44 1256 840400

Document # M2316EN.2005-12, Rev. D
 GPSP Printed 12/2005, 5000
 ©2004 by STERIS Corporation.
 All rights reserved. Printed in USA.



STERIS Corporation
 5960 Heisley Road
 Mentor, OH 44060-1834 • USA
 440-354-2600 • 800-548-4873
www.steris.com