



HexaVue

Built for care

HexaVue™ integration system

 STERIS

Built together: your vision, our expertise

You have a vision for your operating room. A vision focused on delivering an unrivaled patient experience and uncompromised patient care. Care that is achieved through optimal safety, efficiency, and patient outcomes.

- STERIS has been partnering with healthcare teams like yours for over 110 years. We understand your vision and the challenges of realizing it.
- We know the OR is a fast, demanding environment where every second matters.
- We know the importance of planning for and managing an OR.
- We know you want to minimize the overwhelming complexity that consumes your daily life and focus on what matters most.
- That's why we designed the HexaVue integration system to embody all the ways you care for your patients.



Together, we'll
turn your unique
vision into a reality

Together,
we'll help your
team deliver
uncompromised
patient care



Built to empower your team

Whatever role you play within or around your OR, the STERIS team and the HexaVue integration system are here to empower you.



Configured to meet your needs



Administration

Gain valuable support in meeting the Quadruple Aim of improving the experience for patients and staff, reducing costs, and working toward better outcomes



Biomedical engineers

Ensure that each OR is ready for use with remote health checks, and rely on your STERIS team to resolve most technical challenges quickly and remotely



Physicians

See what you need to see – when you need to see it – with detailed, real-time surgical video that helps you consult and educate

HexaVue integration system



IT specialists

Seamlessly connect hospital information systems to the integrated OR, working with our experts to customize systems network implementation



Equipment planners and architects

Collaborate with experienced STERIS project managers for quick and easy installations



Nurses

Prepare the OR for every case at the touch of a button, as well as easily anticipate and react to changing surgical conditions



Built for the operating room

Surgical-grade connections

A universal port offers a simple type of connection for every device

Video conditioners

Small vent-less and fan-less video conditioners transmit signals without introducing latency

Device control

Surgical lights, room lights, cameras and more

Surgical-grade displays

Best-in-class sealed and impact-resistant design has no vents or fans to gather or spread contaminants and make cleaning a challenge

Streamlined OR design

Removes trip hazards and clutter from extra cabling and devices

We know the OR is a fast, dynamic environment where every second matters. The OR depends on efficiency, cleanliness, and safety.



Room presets

Allow room to be configured at touch of a button

Situational awareness

Everyone in the room can have the image, video, or information they require on any display within the room

Simple user interface

Designed with nurses – for nurses – to keep focus on care-related tasks, not the technology

PC access and control

Minimizes the need for more hardware in the room. Charting, PACs, documentation, and internet radio can all be controlled from one central touch panel with mouse and keyboard

Zero-footprint OR design

HexaVue can be placed up to 250 meters outside of the OR to minimize equipment in the room and allow for easy access and maintenance

8K-ready fiber infrastructure



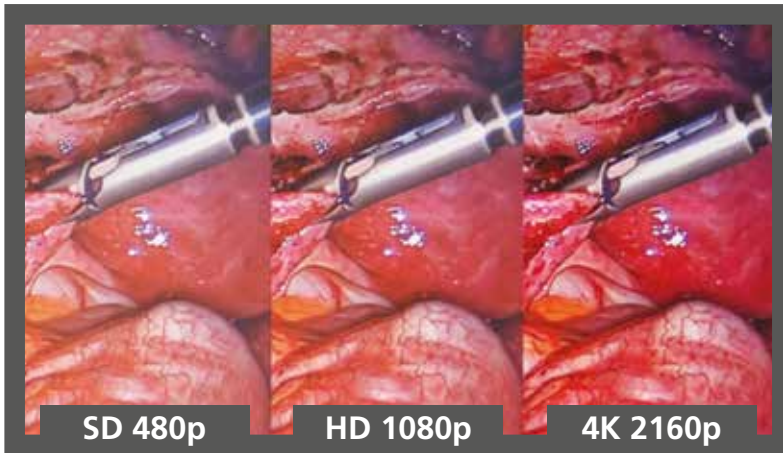
Built for clinical insight

We understand that reliability, visual quality, and near-zero latency are critical to the surgical video experience.

The HexaVue integration system supports truly uncompromised 4K visualization and image capture. Our technology respects and preserves the purity of the video coming from the imaging devices you have invested in and rely upon every day.

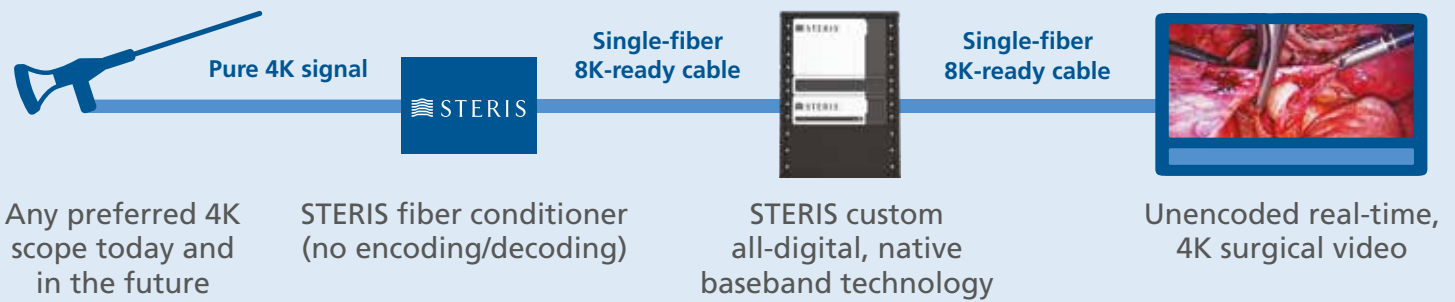
This means you'll benefit from every fine detail in a lesion, blood vessel, nerve, and artery, as well as more shades of color and every second of surgical video in real time.

The 4K video standard supported by HexaVue introduces massive improvements in **color** and **detail** over HD video.



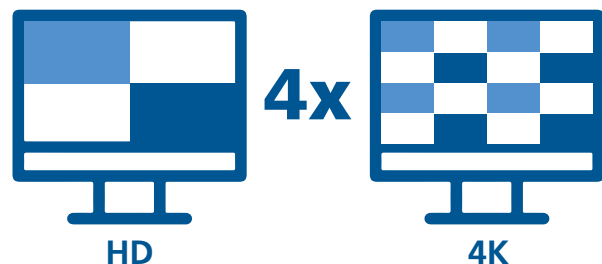
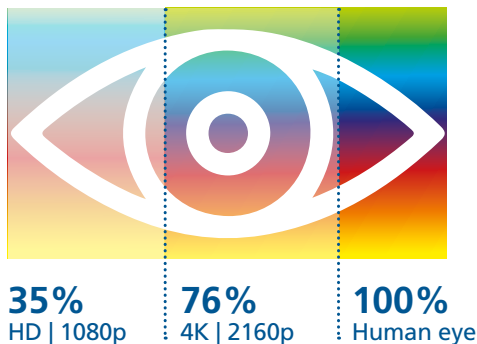
4K visualization

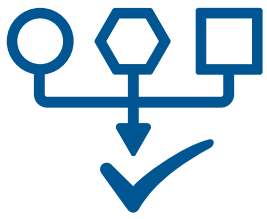
The ability to capture and record 4K color and detail supports informed treatment decisions, synchronized activity.



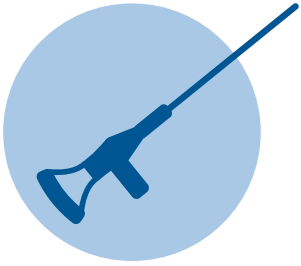
Color provided by the 4K video standard now encompasses 76% of color that is visible to the human eye.

Detail provided by standard 4K video is four times greater than what can be provided on an HD display, capturing detail that simply wasn't possible until recently.

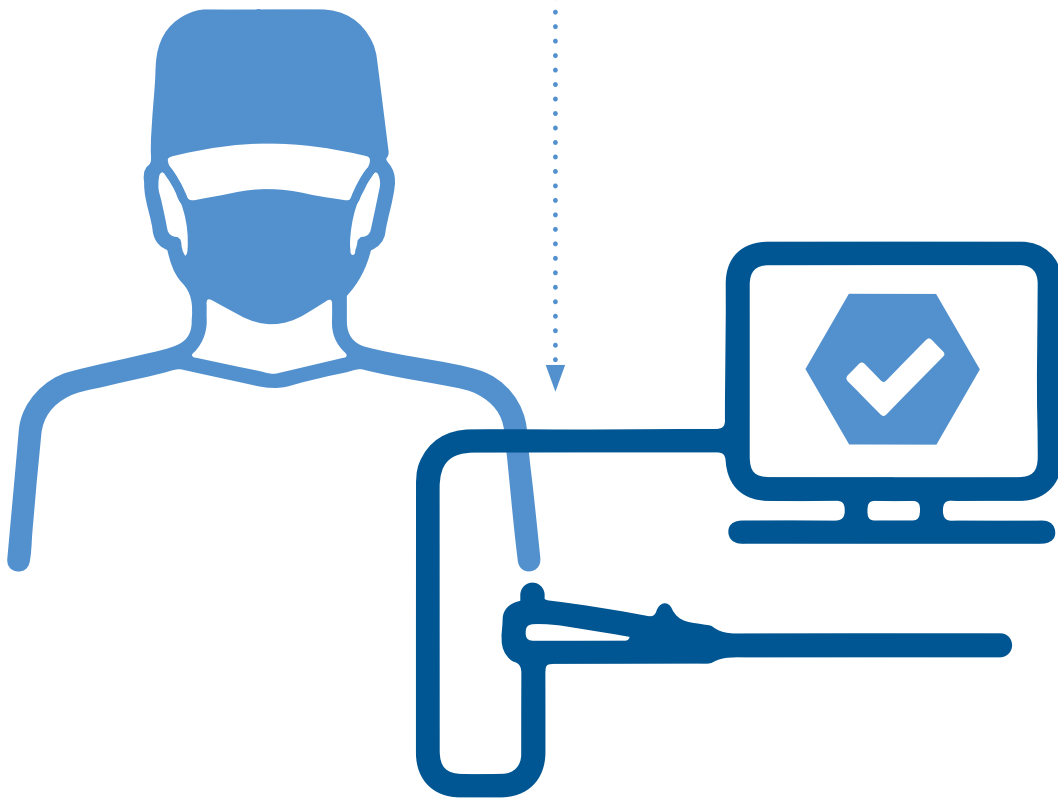




Built for more than basic compatibility



Connect seamlessly with endoscopes and a wide range of imaging devices of your choice



The HexaVue integration system doesn't just connect to one type of endoscope or other imaging device. You can seamlessly connect to the devices you prefer, from any vendor, today and into the future, with the confidence that the image will look its best.

We ensure compatibility by testing other vendors' devices with our integration, and then optimizing our settings for the best image. To meet surgeon preferences, we create customized presets designed to fit specific needs and applications. This allows for consistent workflow regardless of the device used or specialty. Simply connect, capture, record and preset the same way.



Built for a connected world

Communicate hands-free from the surgical field

An icon of a person wearing a headset, enclosed in a dashed hexagonal border.

Remote support

An icon showing a computer monitor displaying a tissue sample and a microscope.

Discuss a tissue sample with pathology during a surgical procedure

An icon showing a play button, a stomach diagram, and three people icons.

Teach classrooms of students during a live streaming event

An icon showing a person at a computer workstation with a satellite dish and a monitor displaying a stomach diagram.

Collaborate in the OR in real time with a specialist in a neighboring OR or across the world

An icon showing a hand pointing at a tablet, with multiple computer monitors in the background, one displaying a stomach diagram.

Connect to and control any number of external PCs residing outside of the OR from one central touch panel

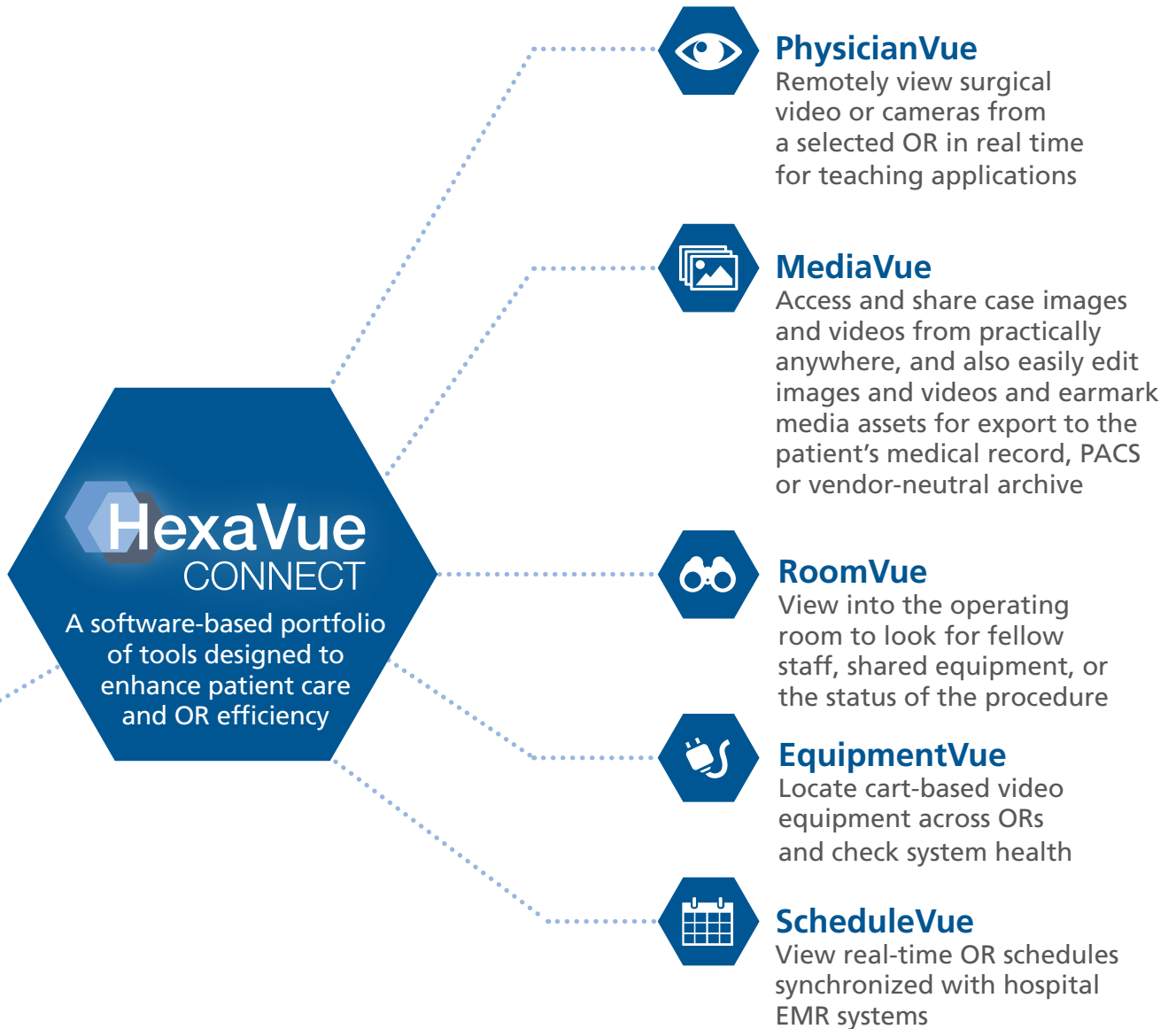
An icon showing a person wearing a surgical cap and mask, with a monitor displaying a stomach diagram and a red arrow pointing to a specific area.

Identify an area of interest by drawing on the screen

An icon showing a hand holding a tablet displaying a stomach diagram.

Share pictures on a tablet with family in waiting room

HexaVue CONNECT puts information at your fingertips.



Robust cybersecurity and Linux-based

Guards against breaches, protecting patient health information



Annotations are shared on all screens



Connect with EMR and PACS with HL7 and DICOM interfaces



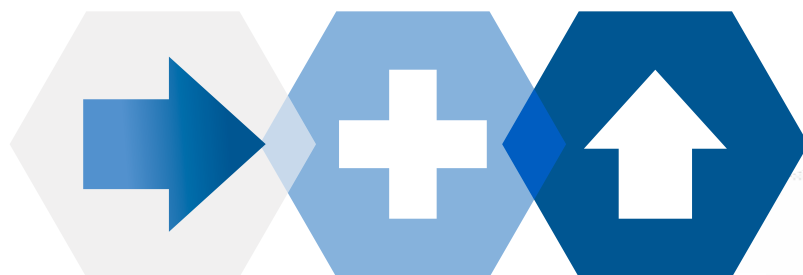
Securely connect from any device anywhere



Built to grow

When you invest in a STERIS integrated OR, you trust that the OR will continue to serve your needs for years to come. The HexaVue integration system is designed to help you keep pace with evolving clinical goals and industry trends.

- Custom-configured to offer the features you need today
- Upgrade after installation through a simple software update to add new capabilities and keep your system current
- Add video conferencing, image capture, and other features through a simple card-based upgrade
- Bring new devices to the OR anytime simply by adding a new connection to the integration system
- Anticipate the future through 8K-ready infrastructure to support the future of medical video



Future-ready

Easy additions

Upgrade





HexaVue CONNECT

PreOp

- ScheduleView**
View live, updated OR schedule
- EquipmentView**
View status or locate equipment connected to HexaVue network

IntraOp

- PhysicianView**
View endoscopic camera video feeds for endoscopic spine
- PhysicianView**
Priority-rated video streams for the OR team or consultant

PostOp

- Medication**
Storage and stock images and videos captured during procedure

CAPTURE & RECORD

📷 3 📹 2



SOURCE: Free 5



00:01:44

Add new capabilities, features and devices to the OR anytime



Built and supported by experts

We are here to support you from the minute we begin planning your integrated OR and throughout the lifetime of your HexaVue integration system.

Your STERIS team

Account manager and ORI specialist

Work closely with key members of your facility to identify your team's short- and long-term requirements



Project design manager

Designs the ideal integrated OR in partnership with hospital stakeholders



Integration installation team

Led by a dedicated project manager, these certified video and technology specialists are trained extensively in STERIS integration system design, installation, and application



Project manager

Collaborates closely with architects, equipment planners, construction, and hospital personnel to ensure that the project is executed seamlessly



Local service and support network

Comprised of more than 800 service technicians across the USA, enabling prompt in-person assistance by the largest and most dedicated service and support structure in the USA



Rapid-response remote support specialists

We bring more to you and your OR

5,000+

STERIS integrated ORs
in North American alone



**dedicated team
of experts**

guides every step of
your integration project

**>75% of technical
support requests
resolved remotely**

with the help of remote
system diagnostics



Built for the future

Your OR needs will change over the years.
New procedures. New surgeons. New services.
New technologies. The HexaVue integration
system is ready for whatever comes next.
And we'll be with you every step of the way.



Built for your success

Each of the thousands of integrated ORs we've designed is tailored to the unique needs of our customers. We deliver systems that are consistently built for more, because that's what the future demands of you and of us.



Built for the OR

Solutions designed for ease of use, infection prevention, and OR-level durability and performance



Built to grow

Scalable, flexible, and future-ready integration



Built for clinical insight

Commitment to uncompressed, uncompromised, real-time surgical video



Expert support at every stage

Expert design, delivery, and support of top-level integrated video products



Built for more than basic compatibility

Support for the range of equipment such as endoscopes that physicians prefer to use, so that each device can perform at its best



Built to connect

Instant connection of clinicians in the OR with the data, tools, and teams they need most to deliver optimal patient care



STERIS SAS

116 avenue de Magudas
33185 Le Haillan - France
T +33 5 56 93 94 94
F +33 5 56 93 94 95
contact_hc@steris.com
www.steris-healthcare.com

STERIS Solutions Ltd

Chancery House
Rayns Way
Leicester LE7 1PF - UK
Tel: +44 116 274 0600
contact_hc@steris.com

STERIS Corporation

5960 Heisley Road - Mentor
OH 44060-1834 - USA
T +1 440-354-2600
F +1 440-639-4457
www.steris.com

ASIAN Headquarters

STERIS SINGAPORE PTE LTD
3 International Business Park
#01-20 Nordic European Center
Singapore 609927
T + 65 6841 7677
APCS@steris.com

STERIS OFFICES WORLDWIDE

Belgium	+ 32 3 304 95 44
Canada	+ 905 677 0863
Germany	+ 49 221 4661 20 30
Italy	+ 39 02 213 034 1
Latin America	+ 55 11 3372 9499
Russia	+ 7 495 225 85 63
Spain	+ 34 91 658 5920
Switzerland	+ 41 (0) 32 376 02 0
UK	+ 44 116 2740 600