

KERNA™ GENERAL SURGICAL TABLE



Focus on the
essential

 STERIS

We have gone very far with the **essentials**

KERNA :
adj. (Esperanto)
Fundamental, essential

With over 100 years of experience in the world of operating tables, STERIS is proud to introduce the KERNA™ general surgical table, a product that meets your essential surgical needs. The KERNA™ general surgical table is versatile, efficient, and very accessible in many aspects.

The KERNA™ general surgical table is everything that is essential to you; it is inspired by the CMAX®3 surgical table, a model of reliability and robustness.

THE KERNA™ GENERAL SURGICAL TABLE BENEFITS

VERSATILE



Its multi-section platform and patient positioning capabilities are optimized to adapt to a broad range of surgeries.

GREAT VALUE



The KERNA™ general surgical table provides Customers with all the essential surgical table needs for an affordable price.



ERGONOMIC

A design that offers optimal access to the medical team (high and low approaches).



EASY MAINTENANCE

The surfaces are all accessible, cleaning is optimal in a short amount of time.



MODULAR

The KERNA™ general surgical table accepts the extensions and options of the CMAX™3 surgical table range, for a strategic and lasting investment.



ROBUST AND RELIABLE

Electro-hydraulic system and high-performance materials (stainless steel, aluminum).

4

The KERNA™ general surgical table is available in **four versions** (depending on height and choice of cushion type). This versatility allows you to choose the model that best suits your working environment.



Satisfy your essential needs

SAFETY AND COMFORT...

FOR PATIENTS

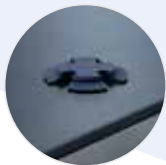
Triple-density memory foam pads with welded edges for excellent pressure points distribution.



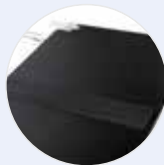
2 types of fasteners offered:

- Hook and loop straps
- SnapLINX™ fasteners. The pads are attached for precise positioning

SnapLINX™
fasteners



Hook and loop
straps



INFECTION PREVENTION

The materials were chosen for their ease of cleaning, from the base to the column, from the tabletop to the cushions.

FOR MEDICAL TEAMS

- **Ergonomics:** reduced footprint for better surgeon access. And to go further, possibility to slide the tabletop
- Easy access to imaging devices thanks to **the reduced base size**



Long battery life:
up to 60 procedures



In case of battery discharge, the table can be powered directly from **the main electricity supply**

Surgeon access:
small footprint



2 VERSIONS TO SUIT YOUR WORKING ENVIRONMENT

↑
1,045 mm
to 695 mm*



HIGH VERSION

MAXIMUM HEIGHT: 1,045 mm

Allows the requirements to be met, particularly in terms of trauma to the lower limbs (use of the ORT8100)

↑
945 mm
to 595 mm**



LOW VERSION

Minimum height: 595 mm

It provides excellent access to the surgeon for minimally invasive surgical procedures

WEIGHT CAPACITY

Patient weight capacity:

400 kg
centred on
the column

270 kg
in all
positions



The overload tests were performed pursuant to standard IEC 60601-2-46, i.e. with a safety factor 4 times the claimed weight, so 1,600 kg centred on the column.

Focusing on the **main features** is **essential**

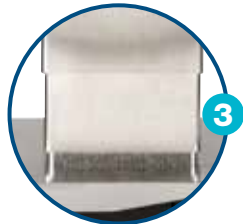
**Quick and easy locking
and unlocking** of extensions
with the Hi-lock system



**Backup panel and
connection ports**
on the column



**Column, base and
tabletop structure**
in electropolished
stainless steel



Reduced base size
maintaining stability
to facilitate access
to surgical teams



Excellent stability
thanks to 4 electro-
hydraulic powered floor
locks (compensation of
up to 4 mm)



OPTIMAL FREEDOM OF MOVEMENT

* 695 mm / 1,045 mm for the high version
** 595 mm / 945 mm for the low version





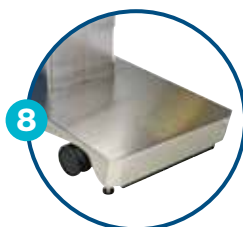
Tabletop design

Allowing exceptional clearance for imaging, even without slide: up to 1620 mm (with the CARBEXT extension and the 4004.003 headrest)



Molded and waterproof bellows

Protects against fluid ingress and decontamination agents



Base with rounded corners and impact-resistant cover



Perfect mobility

4 double roller castors, providing excellent manoeuvrability in all directions



Main connection

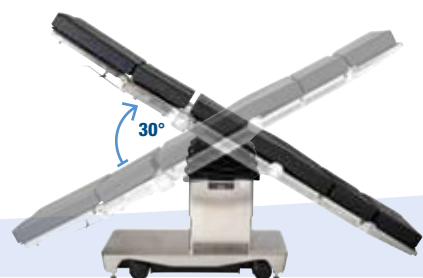


Battery charge indicator



Intelli-Power Technology

- 2 independent power supply modes: batteries or main
- Integrated battery charger (all voltages, all socket types)
- Charge indicators
- Two sealed integrated batteries
- Capacity: up to 60 procedures before recharging



For all movements, the patient can be positioned either in normal or reversed orientation

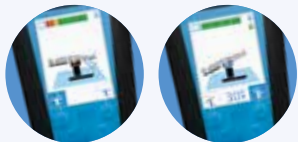


React with the finger and the eye it is **essential**

Supplied as standard, the wired remote control of the **KERNA™** general surgical table is easy to use, light and robust. Equipped with pictograms, it allows the user to easily view all the functions of the table.

WIRELESS HAND CONTROL

As an option, a remote control with intuitive functions makes it possible to control and view on the screen the selected movement and the angles of the table.



This hand control allows the use of motorised leg sections (LEG01M and LEG10M)



Recharge
using the spiral cable provided



Colour screen
with graphic information and display of positioning



Pre-programming
of Flex / Reflex and Beach chair positions and up to 4 user programmable positions



Compatibility with the latest generation CMAX™3 surgical table



Backlit
colour screen and pictograms, ideal for endoscopic surgeries



Safety
Vibrating anti-collision signal (Auto Limit Sensor) to avoid conflicts between motorised sections



Battery discharge level

Flex/Reflex function
Allows combined movements and promotes ergonomic patient positioning

Return-to-level button for the end of the procedure

Optional three-movement foot control



Extensions and accessories that are compatible with the CMAX™3 surgical table are **essential**



LOOKING FOR
AN EXTENSION?
steris-lesindispensables.com

The KERNA™ operating table adds to its versatility of multi-specialty use a very wide range of extensions and accessories.

The STERIS catalogue of accessories and extensions compatible with the KERNA™ general surgical table and CMAX™3 surgical table allows for a broad range of surgical procedures. Most of these extensions are available with hook-and-loop or SnapLINX™ fasteners (reference with an additional E at the end, ex: HEAD04BE).

EXEMPLARY MODULARITY

The extensions can be installed on both sides: normal orientation or reverse orientation.



* Except for ORT8000B and ORT9000B orthopaedic extensions

** Requires the optional hand control

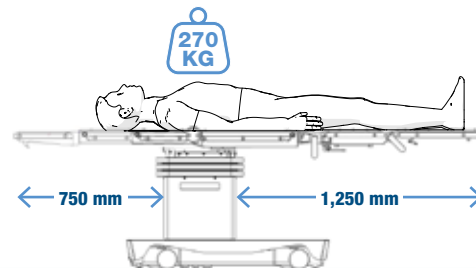
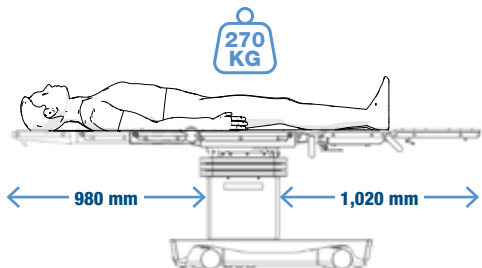
Offering an **optimal imaging** window is **essential**

SUITABLE FOR
MINIMALLY INVASIVE,
CARDIOTHORACIC,
VASCULAR AND
NEUROSURGERY.

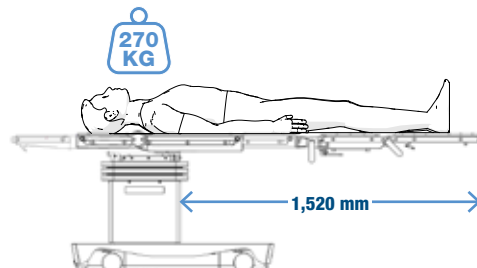
This was the first requirement of the technical specification: to create a table that provided **excellent patient access** when using imaging devices, with or without the use of the sliding function of the tabletop.



For 360° radiolucency,
STERIS offers a carbon fibre extension.



Patient is placed in a normal position. Standard configuration with HEAD05B, BACK02C & LEG30C.
Centred tabletop then slid. The weight capacity is 270 kilograms in both configurations.



Patient is placed in a normal position. Standard configuration with HEAD05B, BACK02C & LEG30C.
Slid tabletop. The weight capacity is 270 kilograms in this configuration.

Perfect integration
of the C-arm thanks
to the compact design
and the low profile
base.



Lateral decubitus position
with application for
a nephrectomy procedure.



Effectiveness in **all specialties** is **essential**

The KERNATM general surgical table has a wide range of possibilities to cover all surgical disciplines. Versatile and modular, this table offers comfort for the patient and medical team.

GENERAL
SURGERY



RECONSTRUCTIVE
SURGERY



GYNAECOLOGY/
UROLOGY



NEUROSURGERY



ENT
OPHTHALMOLOGY



COLORECTAL
SURGERY



Suitable for **orthopaedic surgery** of the lower and upper limbs



**SHOULDER
SURGERY**
with BAK05C



**SHOULDER
SURGERY**
with BAK05C
and Schure Loc™ XPS

FEMORAL TRACTION
with ORT8100



**SPINAL
SURGERY**



**HAND OR HUMERUS
SURGERY**



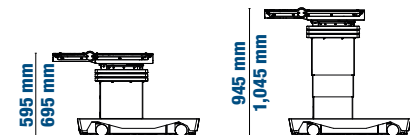
**KNEE
ARTHROSCOPY**



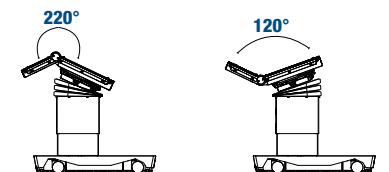
MOVEMENT POSSIBILITIES

Seat and half backrest

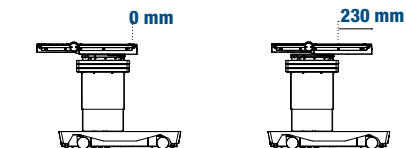
Down/Up



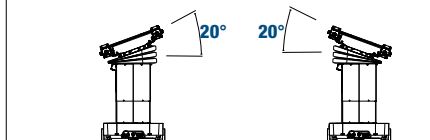
Flex/Reflex



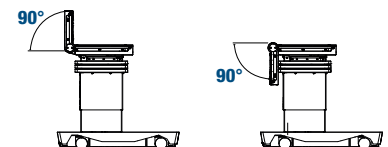
Slide



Tilt



Backrest



Trend/Rev Trend

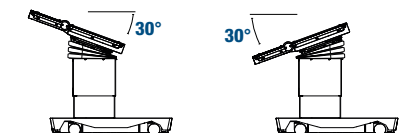


TABLE MODELS

The Kerna™ general surgical table is available in four versions

Reference	Kerna™ surgical table model
KERNAHV	HIGH version and pads with hook and loop straps
KERNALV	LOW version and pads with hook and loop straps
KERNAHSX	HIGH version and SnapLINX™ fasteners
KERNALSX	LOW version and SnapLINX™ fasteners

What's **essential**

is our **experience** and our **commitment to service**

We assist our Customers worldwide in the proper use and maintenance of their equipment to keep it at its highest level of performance: the best way to optimise your investments.

This assistance is reflected in several service offers in the field that involve experienced and responsive professionals.

SERVICES DEPARTMENT



CUSTOMISABLE SERVICE CONTRACTS

Our customisable SECURECARE™ service contracts are tailored to your needs and those of your organisation.

Every level of coverage comes with technical support, STERIS parts and detailed service documentation at the very least.

Attentive, responsive, professional...

we are involved to ensure that your equipment performs at all times, in both its proper use and long-term reliability.

This involvement makes sense, as it fuels our boldness and pride in offering one of the most advanced technological solutions available.



PERMANENT STOCK OF SPARE PARTS

With this stock of genuine STERIS parts, we can instantly respond to all of your urgent requests, dramatically reducing downtime on your surgical table.



TRAINING CENTRE TO INCREASE EXCELLENCE

The training centre is an essential part of the full understanding and maintenance of all products in the STERIS range. Primarily for biomedical engineers, this training takes place at the Haillan headquarter in France or at the installation site.

Several levels are offered; from daily checks to parts replacement and more complex repairs, tailored to the needs of our Customers.

The KERNA™ general surgical table is a Class I CE marked medical device. Carefully read the instructions contained in the user and labelling manual to use this equipment as intended

STERIS, Patient safety is our priority.

With more than 16,000 employees worldwide, STERIS is a leader in the healthcare sector. In more than 100 countries, STERIS innovations have improved the day-to-day routine of hospital teams:

Patient safety is our priority. Teams and equipment must be completely reliable. STERIS helps you to implement optimal organisation of all your medical procedures.



KERNA™ general surgical table

Distributed worldwide - the KERNA™ general surgical table is made in France at a site that brings together all STERIS Group resources, from high-level engineers and technicians to global sales teams.

A close synergy is therefore set in motion, making it possible to align with the market in real time and to meet all the requested quality and safety requirements.

- Proximity and heeding the specific needs of Customers
- Control of industrial processes and production quality
- Integrating the best European suppliers, giving preference to local suppliers

STERIS SAS

116 avenue de Magudas
33185 Le Haillan - France
T +33 5 56 93 94 94
F +33 5 56 93 94 95
contact_hc@steris.com
www.steris-healthcare.com

STERIS Solutions Ltd

Chancery House
Rayns Way
Leicester LE7 1PF - UK
Tel: +44 116 274 0600
contact_hc@steris.com

STERIS Corporation

5960 Heisley Road - Mentor
OH 44060-1834 - USA
T +1 440-354-2600
F +1 440-639-4457
www.steris.com

STERIS Solutions Pte Ltd

3 International Business Park
#01-20 Nordic European Center
Singapore 609927
T + 65 6841 7677
APCS@steris.com

STERIS OFFICES WORLDWIDE

Belgium	+ 32 3 304 95 44
Canada	+ 905 677 0863
Germany	+ 49 221 4661 20 30
Italy	+ 39 02 213 034 1
Latin America	+ 55 11 3372 9499
Russia	+ 7 495 225 85 63
Spain	+ 34 91 658 5920
Switzerland	+ 41 (0) 32 376 02 00

